

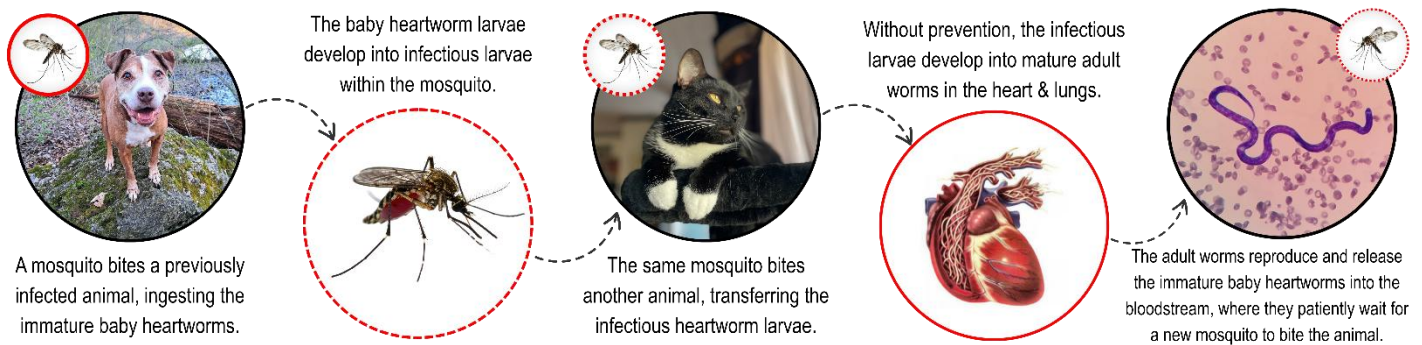
Heartworm

Heartworm disease is a silent killer! Fortunately, there are safe and inexpensive monthly preventions that will keep your pet safe from this deadly disease. Below you will find several vital facts to help you understand the risks to your pet.

Heartworm Facts:

- Transmitted **ONLY** by mosquitos.
- Although dogs, cats, & ferrets are the primary hosts – wild animals like racoons, foxes, coyotes, and wolves can also be infected.
- Adult worms can grow to 12-14 inches!
- Adult worms can live 5 – 7 years within a pets heart.
- 1 – 2 worms can be fatal for cats.
- Average canine cases have 15 – 20 adult worms – with severe cases reporting 100+ worms!
- Heartworm positive cases have been confirmed in all 50 states, as well as across the globe.

Heartworm Life Cycle



Heartworm Symptoms & Testing

Symptoms

- Most pets show **NO** symptoms at all until the advanced stages of disease.
- Persistent cough
- Exercise intolerance
- Lethargy
- Weight loss
- Decreased appetite

Testing

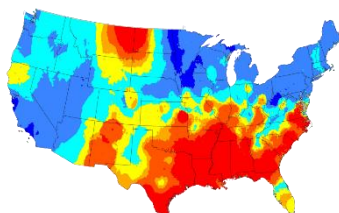
- A small blood sample
- It can be run in the office within 10-15 minutes.
- Typically included in Wellness Labs

Prevention vs. Treatment:

Prevention

- All pets must test Negative before starting any prevention.
- Typically, a once monthly medication that will also deworm against intestinal parasites.
- Canine ProHeart is an injection that provides 12-months of protection against heartworm only. Must be administered by a veterinarian.

2025 Heartworm Prevalence



Treatment (*Dogs ONLY*)

- There is **NO** known treatment for cats.
- Not all pets will be candidates for treatment.
- Several additional diagnostics will be required to determine if the pet is medically able to undergo treatment.
 - Including but not limited to:
 - ✓ Bloodwork
 - ✓ X-Rays
 - ✓ EKG
- Treatment is a multi-stage process including 2 injections of a powerful parasiticide that has potential serious side effects.
- Additional antibiotics and steroids are usually prescribed to support the pet during treatment.
- Strict activity restrictions are required for 6+ months while the pet's body absorbs the dead worms.